

HEMA-3000

5-Part-Diff Auto Hematology Analyzer



**Laser light and impedance
measurements on WBC**





- Laser light multi-dimensional cell classification
- Double mode for WBC count (Impedance Count and Optical Count)
- Resistant: RBC mode
- Sample rotatory valve quantification technique
- Up to 110 samples per hour
- Walk-away automation, high efficiency and accuracy
- WBC 5 part diff with sheath reagent only.
- Semiconductor laser based flow cytometry for WBC Differential with specific staining to stain nucleic acid content of
- Cells which generate fluorescence to differentiate between abnormal cell and normal cells.
- The System have auto probe Wiper to clean the sample probe automatically after sample aspiration.
- The system have automatic floating threshold for correct separation of WBC, RBC's and platelets during overlap of microcytosis.
- Able to perform all blood counts from whole blood and blood components at different dilutions for the purpose of quality control.
- Online voltage corrector.
- Built-in thermal printer connected to external computer and printer.

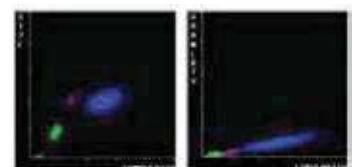
Helium-neon laser light scatter:

HEMA-3000 Auto Hematology Analyzer uses helium-neon laser for the flow cytometry system. Through calculations of different angles via laser scatters the instrument provides complete analysis including cell size, granularity and complexity.



One channel give complete differentiate WBC:

HEMA-3000 counts lymphocyte, monocyte, Neutrophil, eosinophil and basophil in WBC channel.

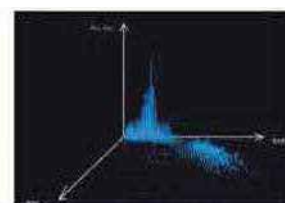
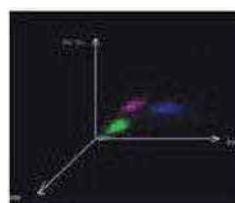


Sample Rotatory valve (SRV):

High precision
Easy maintenance
Blood sensor monitors aspiration volume



3D stereograms:



Specification:

27 parameters	WBC, LYM%, MON%, NEU%, EOS%, BAS%, LYM#, MON#, EOS#, BAS%, LYM#, MON#, NEU#, EOS#, BAS#, RBC, HGB, HCT, MCV, MCH, MCHC, RDW_CV, RDW_SD, PLT, MPV, PDW, PCT, P_LCR RETIC%, RETIC_ABS, IRF 3 Histograms for RBC, WBC and PLT 2 Scatter grams: 5-part differential scatter gram Eosinophils and Neutrophils scatter gram 2 3-D stereograms
Principles of operation	WBC 5-part:flow Cytometry (FCM)+ 4 Angles laser light scatter WBC Analysis: Optical and impedance measurements RBC/PLT Analysis: Impedance method HGB test: Cyanide-free reagent colorimetry RET test: Flow Cytometry (FCM)+ laser light scatter + Chemical dye method
Sampling modes	Auto loader 160μL, Manual mode 160μL, Pre-diluted mode 40μL
Aperture Diameter	WBC 100 um, RBC/PLT 80 um
Throughput	Auto loader upto 110 samples per hour Manual mode upto 100 samples per hour
Sampling Device	Automatic sampling device with a capacity of 120 samples 10 samples x 12 racks, auto built-in barcode reader
Linearity	WBC should be from 0 to 4,00,000 cells/μL, PLT should be from 0 to 50,00,000 cells/μL
Data Storage	Up to 200,000 sample results with grams
Alarms	Error messages
Display	PC display with Linux system, 15 inch colour LCD display
Dimension	760 mm x 684 mm x 676.5 mm
Sample type	Venous blood, peripheral blood, Pre-dilution peripheral blood and various dilutions of blood.
Power supply	220/240 volts, 50/60Hz
Interface	USB for printer, mouse and keyboard, internet port.

Regulatory compliances



Corporate Social Responsibility

Analytical Foundation is a Nonprofit Organization (NGO) found for the purpose of:



**Analytical
Foundation**

1. Research & Innovation Scientist's awards / QC Professional Award: Quality life is possible by innovation only and the innovation is possible by research only, hence ANALYTICAL FOUNDATION is committed to identify such personalities for their contributions across various field of Science and Technology and awarding them yearly. To participate for award, send us your details of research / testing / publication at info@analyticalfoundation.org

2. Improving quality of life by offering YOGA Training courses, Work shops / Seminars etc.

3. ANALYTICAL FOUNDATION aims to DETOXYFY human minds, souls and body by means of Yoga, Meditation, Ayurveda, Health Care, Awards, Media, Events, Camps etc.

Reach us @



 **Analytical**®
Technologies Limited

HPLC Solutions MultipleLabs Analytical Bio-Med Analytical Distributors Analytical Foundation (Trust)

Corporate & Regd. Office:
Analytical House, # E67 & E68,
Ravi Park, Vasna Road, Baroda,
Gujarat 390 015. INDIA

T: +91 265 2253620
+91 265 2252839
+91 265 2252370
F: +91 265 2254395

E: info@hplctechnologies.com
info@multiplelabs.com
info@analyticalgroup.net
info@analyticalbiomed.com

W: www.ais-india.com
www.analyticalgroup.net
www.hplctechnologies.com
www.multiplelabs.com

Sales & Support Offices:
across the country :
Distributors & Channel
partners World Wide